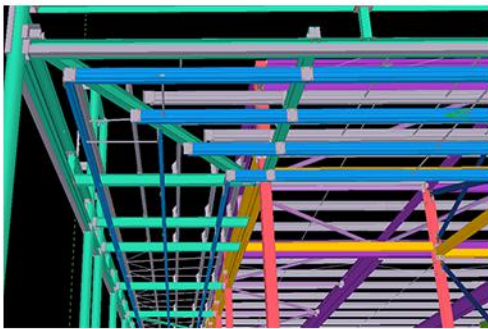


Retail



Retail

Project: Lidl Chichester
Client: Soldi
Tonnage: Circa 105 tonnes
Location: Chichester

This project involved the fabrication and erection of a new build Lidl store in Chichester. The new build was to take over a nearby existing store in the area.

The large span monopitch frame featured large rafters to accommodate the uninterrupted supermarket area traditionally featured in Lidl's specifications. The project was a unique specification whereby Snashall Steel were tasked with providing an entrance canopy and signage support steelwork for the client which was galvanized. Close coordination was required with both cladder and architect to ensure the make-up of the canopy was flashed and supported in all areas.

As per similar Lidl buildings Snashall Steel have fabricated, we were tasked with the erection of the composite concrete panel at the loading bay, close tolerance and coordination was required to ensure the panel was fixed accurately and securely with dictated installation points in the panel.



SSS F
SNASHALL STEEL FABRICATIONS CO. LTD

Pulham Business Park
Pulham, Dorchester,
DT2 7DX,
Phone 01300 345588
Fax 01300 345533
www.snashallsteel.co.uk