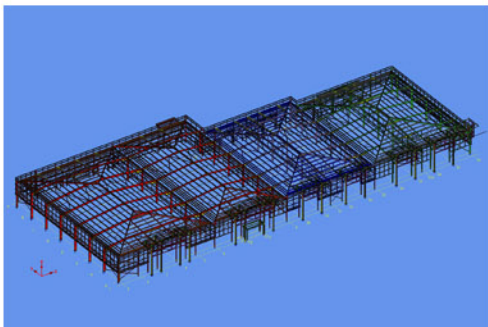


Retail



Retail

Project: Redlands Retail Park
Client: Norwest Holst
Tonnage: 300 tonnes
Location: Poole

This development involved the fabrication and erection of new retail units. The main buildings are portal frames with cold rolled rail and purlin systems. The feature to the front of the building involves a series of reversing curve hollow section frames to simulate a wave effect along the building.

Due to the size of the main entrance canopy areas these were transported to site in sections and site welded together then fixed to the columns with hidden connection details to ensure a clean line on site to satisfy the architectural requirements.



SSSF
SNASHALL STEEL FABRICATIONS CO. LTD.

Pulham Business Park
Pulham, Dorchester,
DT2 7DX,
Phone 01300 345588
Fax 01300 345533
www.snashallsteel.co.uk