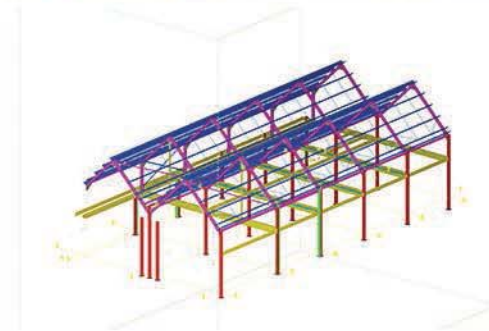


Retail



Retail

Project: Clarks Village
Client: Edgar Builders
Tonnage: 40 Tonnes
Location: Street

This project involved the fabrication and erection of a steel frame for the clothing giant Superdry store in Clarks Village, Street. The 5000sq ft store was to be constructed next to the existing Marks and Spencers outlet.

The frame consisted of 2 joined pitched roofs that allows for maximum floor space and a flexible retail area. In addition to the primary hot rolled steel, cold rolled was also supplied for both roofs.