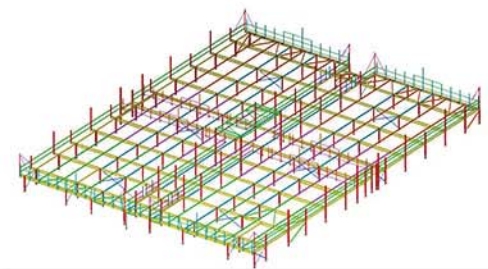


Leisure



Leisure

Project: Hoe Valley Woking Leisure Centre
Client: Volker Fitzpatrick
Tonnage: 200 tonnes
Location: Woking Surrey

The project of Hoe Valley Leisure centre consisted of erecting a elevated above a car park to supply a number of flood lit 3G synthetic turfed football pitches with multiple entrance steel stairs.

The heart of the frame, bound together with an extensive 60 tonne+ of Westok cellular members provided aesthetic, structural and practical means to the frame allowing services to pass through the build.

At pitch level, laps of side support steel assisted the rebound boarding and safety netting for the pitches with mind of an acoustic membrane for an elevation of the frame. Multiple site visits were required which involved the installation of internal rebound supports through the flooring, however the job didn't go into extra time. Large span concrete slabs proved a challenge for our site crews as the frame required mass amount of temporary bracing and supports to enable the slab to be laid and screed prior to the pitches being laid.

As a part of the £1.8m scheme from Freedom Leisure Ltd the frame proved a healthy challenge to all parties involved resulting in a team effort to build the multi-purpose innovative project.



SSSF
SNASHALL STEEL FABRICATIONS CO. LTD

Pulham Business Park
Pulham, Dorchester,
DT2 7DX,
Phone 01300 345588
Fax 01300 345533
www.snashallsteel.co.uk