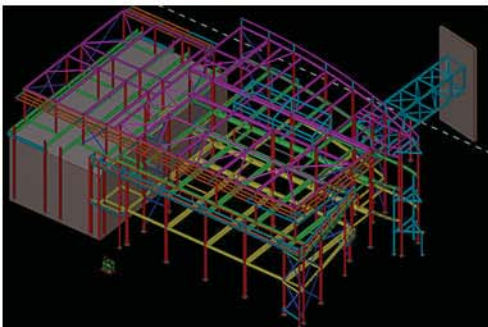


Education



Education

Project: Portsmouth Grammar Sixth Form Centre
Client: Interserve
Tonnage: 97 tonnes
Location: Portsmouth

There was a number of building materials integrated into the design on the building façade. It was essential that the complex support systems required from each manufacturer were accurately translated by the drawing office (using their 3D drawing software Tekla) and transferred for accurate fabrication, especially for the members which built up the curved elevation. Alongside the aforementioned challenges surrounding the erection against the existing structure, our site team were also faced with the customary time constraints and health and safety implications of working within the schools grounds during term time. The logistics of the overall programme were carefully planned to keep disruption to a minimum. This was particularly reflected with our final lift, a 6.5T link truss connecting between the recently erected sixth form centre and the 200 year old listed school. The smooth installation of this integral part was critical to avoid disturbance to the other interface trades, and planned to be erected during a term break.