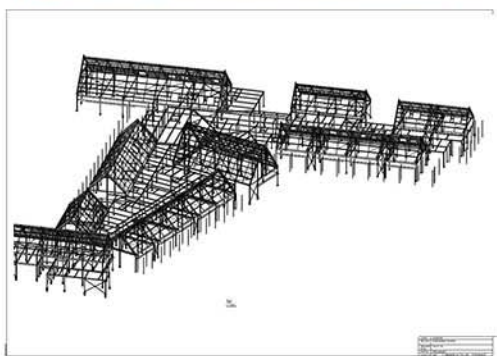


Education



Education

Project: Portesbery School
Client: Osbornes
Tonnage: 230 Tonnes
Location: Portesbery

This project involved the fabrication and erection of a new school in Surrey that was to replace the demolished existing building. The steel frame involved a number of pitched roof buildings inter-linked with a 'flat' roof.

The steelwork incorporated an extensive number of hollow section canopy steels in addition to the hoist support beams required. The sprawling complex was divided into three connected and one isolated steelwork zone.

As well as the hot rolled steelwork, a substantial amount of cold rolled purlins were also supplied to the site.