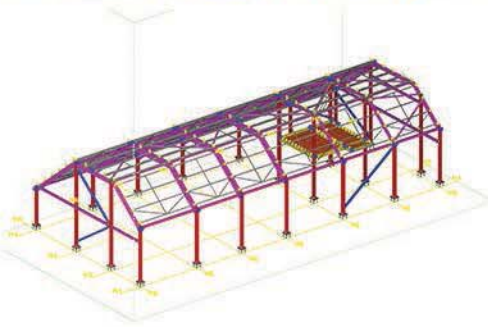


Education



Education

Project: Steiner Academy
Client: Willmott Dixon
Tonnage: 60 tonnes
Location: Exeter, Devon

Steiner Academy was a £7.6 million construction project based in Exeter. Snashall Steel Fabrications were involved in the development of this job which included the design, fabrication and erection of three separate areas at the academy.

The Main Hall was a braced portal frame. This Main Hall consisted of both hot rolled and cold rolled Metsec sections. In the middle of the building was a small Metsec mezzanine floor. The building measured approximately 30m x 13.5m x 7.5m high.

In addition to the main hall, there were three identical galvanized Kindergarten pods each weighing approximately 5T. The pods were a platform for a future building to be created on top of the steel frames. The future building was in the form of six kindergarten classrooms.

The final part of Steiner Academy was the Teaching Block. The teaching block was an 'L' shaped building which consisted of hot rolled steel, Metsec purlins, hollow bracing and another small Metsec mezzanine floor.