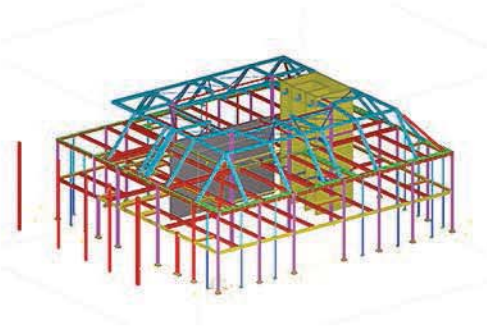


Dwelling



Dwelling

Project: South Wooton House
Client: McIntosh
Tonnage: 90 Tonnes
Location: South Wooton

This project involved the fabrication and erection of a new private house for McIntosh that attractively over looks Glastonbury Tor. The job involved a unique requirement with the installation of thermal breaks for the baseplates. These designs required extensive communication between Snashall Steel and Insula. In addition to this, a large number of connections were required between the steelwork and a 'wavy' feature wall that was installed in the house.

Snashall's were required to land the decking, carry out extensive drilling details and provide fixings for Ancon windposts. The project will feature a very impressive folding roof upon completion.