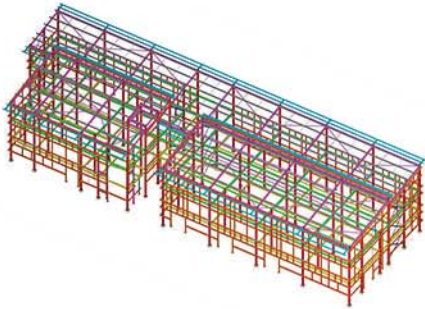


# Commercial



## Commercial

**Project:** Krowji  
**Client:** R M Developments  
**Tonnage:** 117 tonnes  
**Location:** Redruth

The Development involved the fabrication and erection of a new Arts Centre for Krowji in Redruth. Krowji is Cornwall's biggest creative sector cluster and the arts centre is part of large building program to provide more purpose built studios for creative businesses and practitioners.

The building contains two floors of steelwork with two staggered mono pitch roofs. In addition to this, galvanised steelwork was also required to cantilever out on the front and back of the building. As well as the primary steel, a substantial amount of secondary steel was also required to support the cladding around the building with cold rolled members needed to trim the majority of windows and doors.