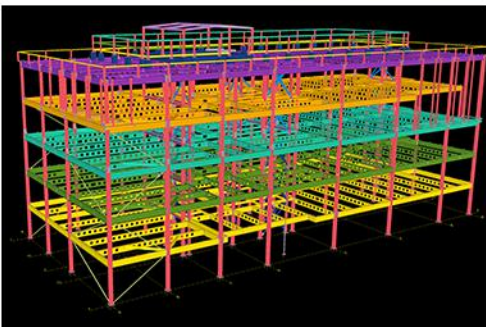
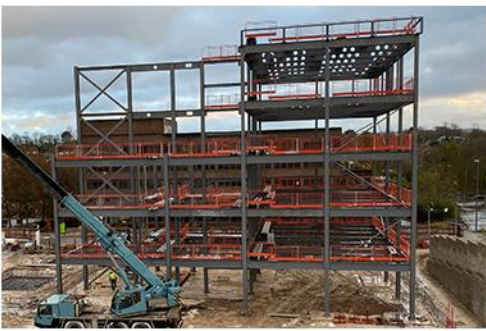


# Commercial



## Commercial

**Project:** Project Sienna, Office Block  
**Client:** Morgan Sindall  
**Tonnage:** 380 tonnes  
**Location:** Basingstoke

Snashall steel were appointed to provide the drawing, fabrication and erection of a new office block in Basingstoke as part of the new £200 million regeneration project. A large percentage of the floor beams are Westok cellular girders which allow for customised section sizes increasing the headspace on all floors. The cells in the beams allowed various M&E services to pass through the girders and in some locations a letter box rectangular opening had to be made.

Around the stairs and perimeter of each floor, small box section sockets were incorporated to allow for the fitting of the easi-edge system by our site team. Temporary bracing also had to be designed and installed by SSF to erect the building in the required sequence.

After the concrete had been installed on the roof a second visit was carried out to fit a rainscreen and plant room. Due to the exposed nature of the rainscreen it was galvanised to help protect it from the elements. The plant room also featured cold rolled rails and purlins to allow for the fixing of the cladding.

We are also due to provide the steel for the car park which is on site early 2020.



**SSF**  
SNASHALL STEEL FABRICATIONS CO. LTD

Pulham Business Park  
Pulham, Dorchester,  
DT2 7DX,  
Phone 01300 345588  
Fax 01300 345533  
[www.snashallsteel.co.uk](http://www.snashallsteel.co.uk)