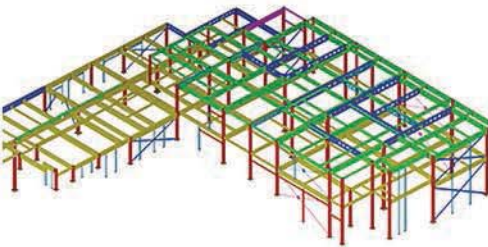


Commercial



Commercial

Project: Premier Inn, Dean Clarke House
Client: Northcliffe Construction
Tonnage: 200 Tonnes
Location: Exeter Devon

This project involved the fabrication and erection of the 2 story steel structure to accommodate a brand new 120 bedroom Premier Inn Hotel. The multi-story building commences with 2 stories of steelwork of which other interfaces continue above on top. The frame consisted of very large steel section sizes, Westok Cellular Asymmetric beams and plated girders to cater for the overhead build both aesthetically and structurally. Despite the extensive steel connections there were multiple bays of Ancon architectural bracing to contribute to Premier Inn's 'contemporary architecture'. Due to a restricted construction site, our erection crew had to plan and work throughout extremely methodically from start to finish to enable a fluent construction of the steelwork which could then allow other interfaces to work to.