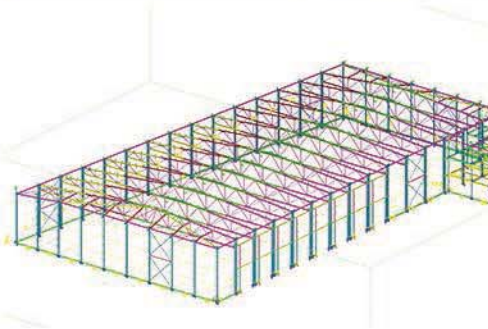


Commercial



Commercial

Project: DHL Building
Client: Neilcott
Tonnage: 250 Tonnes
Location: Elizabeth Industrial Estate

This project involved the fabrication and erection of a large new distribution depot for DHL in Lewisham Elizabeth Industrial Estate. The main roof was formed using trusses that spanned up to 50m. Due to the span of the roof, each truss bay had to be spliced into three or four separate trusses that were then bolted together on site.

In addition to the hot rolled, a significant amount of cold rolled was required, with purlins supporting the roof and side rails supporting the cladding and forming the various openings. As well as the main hanger, a multi-storey office block was erected on the side that also required a substantial amount of cold rolled.