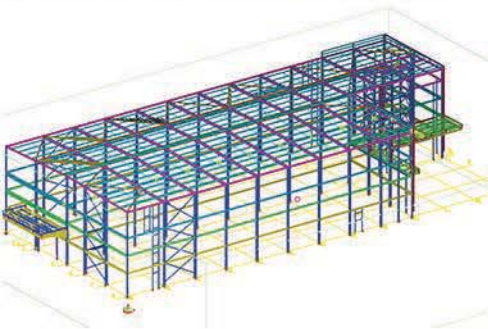


# Commercial



## Commercial

**Project:** Lok 'N' Store  
**Client:** MCS  
**Tonnage:** 160 Tonnes  
**Location:** Southampton

This project involved not only the fabrication and erection, but also the design for the new Lok'N'Store building, Southampton. The building includes a large front feature canopy and also a smaller canopy to the rear. We had to work very closely with the cladders due to our design capacity as this ensured that all the openings and interfaces were correctly co-ordinated.

As well as parapets on both the front feature canopy and the main building, cold rolled purlins were required for the entire building. The frame was erected on time and to the satisfaction of the client.